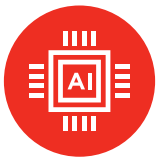


Yoga 9i 2-in-1 Aura Edition (14", 10)

Create Limitlessly.

Create anywhere, any way on Yoga 9i 2-in-1 Aura Edition. Powered by Intel® Core™ Ultra and a 45 TOPS NPU, this Copilot+ PC adapts to your flow with AI-driven performance, while the 360° design lets you create without limits. Aura Smart Modes feel like an extension of your mind, Smart Share connects your phone and PC, and Smart Care has your back.



Your Aura is Limitless

The latest Intel® Core™ Ultra processors enable the most AI experiences like helpful productivity assistants, text and image creation and collaboration effects to make everything you do easier, faster, better now and for years to come. And with hours of battery life and built-in security protections, you can be confident to take on anything.



Built for Creative Freedom

Your ideas, your energy, your way. The Yoga 9i 2-in-1's 360° design gives you the flex to create in any mode—sketch in tablet, design in tent, or type in laptop. The ultra-responsive touchscreen and new Yoga Pen, with tilt, pressure detection, low latency, and magnetic attachment to the front cover, offer precise control. Perfect for creative grinds.



AI-Powered Efficiency For All-Day Use

Thin, tough and built to move. At 15.9mm thin and 1.32kg light, the Yoga 9i 2-in-1 Aura Edition is your go-anywhere, do-anything laptop. Precision CNC machining keeps it sleek and sturdy, plus it's aced over 20 MTL-STD 810H durability tests to handle whatever you throw at it. Power, style, and portability—packed into one ultra-light package.



All Things Bright, Bold and Beautiful

Brace yourself for bigger, brighter, clearer visuals. The 14" PureSight 2.8k OLED touch display brings sharp clarity and bold colors, with 100% sRGB and 100% P3 for spot-on color accuracy—perfect for creators. The variable refresh rate (30Hz-120Hz) adapts to your flow, and with up to 1,100 nits of peak brightness, even sunlight won't dull your screen.



Yoga 9i 2-in-1 Aura Edition (14", 10)

SPECIFICATIONS

YOGA 9 2-IN-1 14ILL10

PERFORMANCE

Processor

Intel® Core™ Ultra 7 258V
Intel® Core™ Ultra 7 256V

Operating System

Windows 11 Home
Windows 11 Pro

Graphics

UMA: Intel® Arc™ Graphics 140V

Memory

LPDDR5X : 16 GB / 32 GB; 8533MHz Dual Channel

Storage

PCIe SSD Gen 4 M.2: 512G/1TB

Camera & Microphone

5MP IR RGB Camera
Camera Privacy Shutter
4 X 3D noise canceling mics

Audio

4 x Lenovo Speakers
(2*2W tweeter, 2*2W woofer)

Battery¹

Integrated Li-Polymer 75Wh battery, supports Rapid Charge Express (get 3 hours of runtime with a 15-minute charge)

Max Battery Life

2.8K OLED models:

MobileMark® 30@250nits: 17.5 hr
Web browsing@150nits: 16.5 hr
Local video (1080p) playback@150nits: 26.5 hr

4K OLED models:

MobileMark® 30@250nits: 12.5 hr
Web browsing@150nits: 13 hr
Local video (1080p) playback@150nits: 19 hr

DESIGN

Display

14" 2.8K (2880 x 1800) 30-120Hz Variable RR 16:10 PureSight, WQHD+ OLED, 1100 nits peak, 100% DCI-P3, True Black 1000, 99% Adobe RGB, Dolby Vision®, VESA Certified Display HDR™ True Black 600, TÜV Low Blue Light Certification, Glass, Touch

14" 4K (3840x2400) 60Hz 16:10 WQUXGA OLED, 500 nits, 100% sRGB, 100% DCI-P3, Dolby Vision®, VESA Certified Display HDR™ True Black 500, TÜV Low Blue Light Certification, Glass, Touch

4-Side Narrow Bezel (92.5% AAR)

Top: 4.45mm
Left/ Right: 2.1mm
Bottom: 7.6mm

Dimensions (W x D x H)²

(mm) : 316 x 220 x as thin as 15.9
(inches) : 12.44" x 8.66" x as thin as 0.63"

Weight

starting from 1.32Kg (2.91lbs)

Hinge

360°

Color

Cosmic Blue
Luna Grey

PRELOADED SOFTWARE

- Windows 11 Home/Pro
- Lenovo Vantage
- Lenovo Now
- Lenovo Utility
- Microsoft 365 Trial
- McAfee+ Premium Trial
- Dolby® Access (Dolby Vision® and Atmos®)
- Intel® Unison™

CONNECTIVITY

WLAN

Wi-Fi 7

Bluetooth³

Bluetooth® 5.4

Input/Output (I/O) Ports

Left

- 2x USB-C® (Thunderbolt™ 4 / USB4® 40Gbps), with USB PD 3.0 and DisplayPort™ 2.1
- 1x USB-A (USB 10Gbps / USB 3.2 Gen 2), Always On

Right:

- 1x USB-C® (USB 10Gbps / USB 3.2 Gen 2), with USB PD 3.0 and DisplayPort™ 1.4
- 1x Headphone / microphone combo jack (3.5mm)

NOTEABLE MENTIONS

- EPEAT® Gold-registered⁴
- ENERGY STAR® Rated
- Carbon Neutral Certified
- Plastic-free Packaging
- 50% Recycled Aluminum in the Bottom Cover
- MIL-STD 810H Passed

¹ Leading battery technology ED900 battery with 5% Si and 1000cycle>=80% remaining super long cycle life.

All battery life claims are approximate maximum and based on results using the MobileMark® 2014, MobileMark® 2018, MobileMark® 25, MobileMark® 30, JEITA 2.0, JEITA 3.0, continuous 1080p video playback (with 150nits brightness and default volume level) or Google Power Load Test (PLT) battery-life benchmark tests. Actual battery life will vary depending on many factors such as product configuration and usage, software use, wireless functionality, power management settings, and screen brightness. The maximum capacity of the battery will decrease with time and use.

² Height is calculated using T2 measurements and should be considered 'as thin as'.

³ The actual transfer speed of the USB 3.2 will vary and, depending on many factors, such as the processing capability of host and peripheral devices, file attributes and other factors related to system configuration and your operating environments, may be slower than a speed of 20 Gbit/s.

⁴ EPEAT®-registered where applicable - see www.epeat.net for registration status by country.

LENOVO SERVICES

Lenovo Premium Care Plus

Lenovo Premium Care Plus is the ultimate PC support experience with you as our priority 24/7. Enjoy personalized hardware and software support from a global network of elite technicians, along with accidental damage protection, fast repairs with onsite support, extended battery warranty, data migration assistance, and smart performance solutions that optimize PC performance and security.

Lenovo Smart Performance

Smart Performance Services within Lenovo Vantage will keep your system running at optimum performance and proactively fix issues that affect PC performance, internet performance, remove malware, and improve device security.

Lenovo Accidental Damage Protection

Avoid the hassles of unexpected damage & repair costs. With coverage for drops, spills, electric surges, and broken LCD screens, accidental damage protection makes it easy to repair to your PCs and ensures your device is up and running fast.

Lenovo CO₂ Offset Services

Offset the carbon emissions of your PC with Lenovo CO₂ Offset Services - an easy and transparent solution to offset emissions across the average lifecycle of your device. These offsets are invested in UN-approved initiatives like renewable energy or ecological projects, thus contributing towards a more sustainable future.

Lenovo Sealed Battery Warranty

Long-lasting battery life is not just a feature but a necessity to help you stay productive and connected all day long. Protect your PC's sealed battery from degradation, enjoy hassle-free battery replacement service, and safeguard your PC from future battery failure with our Sealed Battery Warranty Service.

Lenovo Warranty Extensions (Up to 3 Years Duration)

Gain complete peace of mind by extending your base warranty to up to 3 years and minimize unexpected repair costs.

OPTIONS & ACCESSORIES



Lenovo Yoga Slim Mouse



Yoga 14-inch Sleeve



Lenovo TWS YOGA PC Edition

McAfee® LiveSafe™

Register McAfee® to enjoy these benefits in your FREE 30-day trial.

- Award-winning Antivirus
- Password Manager
- Safe Web Browsing
- Multi-device Compatibility
- Identity Theft Protection
- Free Customer Support

* Example of Lenovo catalogue naming convention



Intel® platform codes

Gemini Lake: IGM, Whiskey Lake: IWL, Icelake: IIL, Gemini Lake: IGL, Comet Lake: IML, Tiger Lake: ITL, Alder Lake: IAP, Alderlake-HX: IAX, AlderLake-U15: IAU, AlderLake-P28: IAP, AlderLake-P28/U15: IAL, AlderLake-H45: IAH, Alderlake N: IAN, Raptorlake-PX: IRP, Raptorlake-H: IRH, Raptorlake-HX: IRX, Alderlake-M U9: IAM, Raptorlake U: IRU, Meteorlake P: IMP, Raptorlake-P: IRP, Raptorlake-P28/U15: IRL, Meteor Lake-H: IMH, Lunar Lake: ILL.

WWW.LENOVO.COM

Lenovo reserves the right to alter product offerings and specifications at any time, without notice. Lenovo makes every effort to ensure accuracy of all information but is not liable or responsible for any editorial, photographic or typographic errors. All images are for illustration purposes only. For full Lenovo product, service and warranty specifications visit www.lenovo.com. Lenovo makes no representations or warranties regarding third party products or services. **Trademarks:** The following are trademarks or registered trademarks of Lenovo: Lenovo, the Lenovo logo, ideapad, IdeaCentre, yoga and yoga home. Microsoft, Windows and Vista are registered trademarks of Microsoft Corporation. Intel, the Intel logo, Intel Inside, Intel Core, and Core Inside are trademarks of Intel Corporation in the U.S. and/or other countries. Other company, product and service names may be trademarks or service marks of others. Visit www.lenovo.com/lenovo/us/en/safecomp/ periodically for the latest information on safe and effective computing.

©2024 Lenovo. All rights reserved.



Lenovo